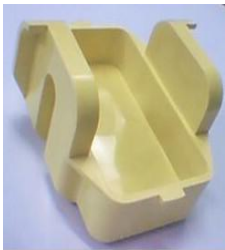


## Cytoprep-1 Cytology Centrifuge



### Features:

1. Widely used in the field of biochemistry, biological products, pharmaceutical factory and laboratory.
2. Brushless motor, free maintenance, no powder pollution.
3. Micro computer control, digital indicates the time, speed and RCF.
4. Electric lid lock, over speed and imbalance protection.
5. The centrifuge body is made of high-quality steel, safe and reliable.

### Technical Parameters for metal door:

Max speed:	4000rpm	Max RCF:	2170×g
Max volume	6 samples	Noise:	≤55dBA
Timer	0~99min	Net weight:	30 KG
Dimension(HxDxW):	280×528×370mm	Power supply	AC220V/110v 50HZ 2A
Speed accuracy:	±20rpm	Package	carton box